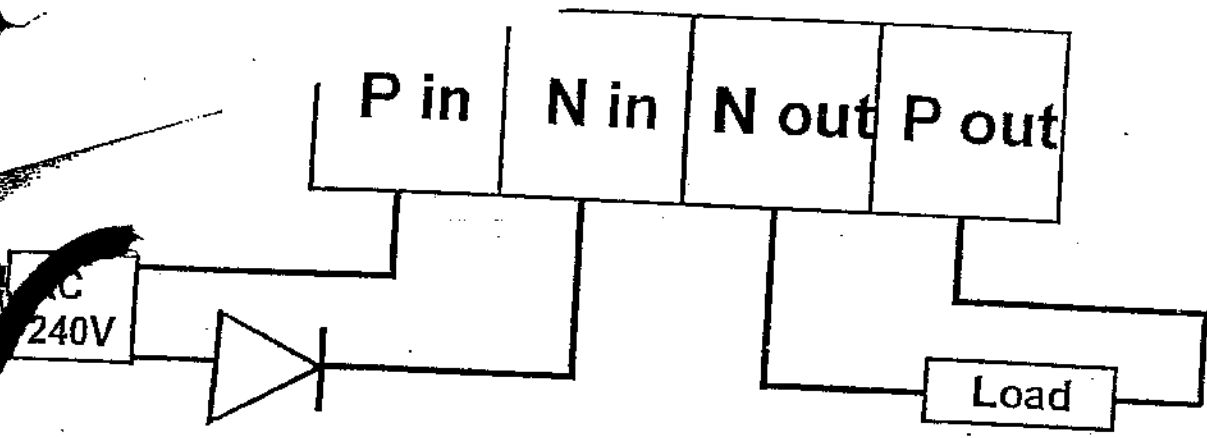


Schedule

9

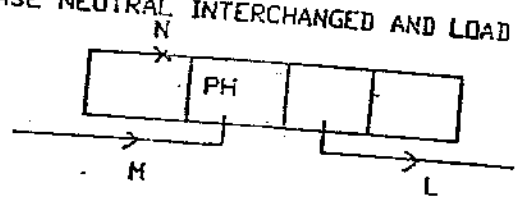
Annexure-I



ANNEXURE-II

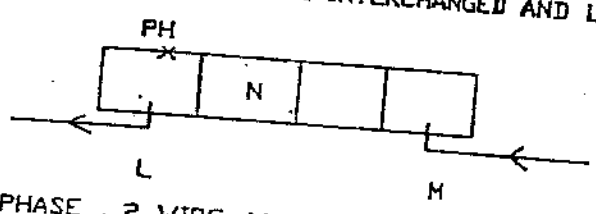
SINGLE PHASE , 2 WIRE, WHOLE CURRENT CLASS 1.0 STATIC ENERGY METER  
ACCURACY TEST IN ANTI TAMPER CONDITION

(c) PHASE NEUTRAL INTERCHANGED AND LOAD EARTHED



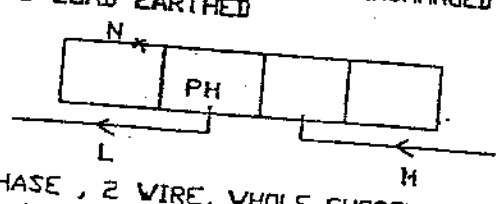
SINGLE PHASE , 2 WIRE, WHOLE CURRENT CLASS 1.0 STATIC ENERGY METER  
ACCURACY TEST UNDER TAMPER CONDITION

(d) SUPPLY AND LOAD SIDE INTERCHANGED AND LOAD EARTHED



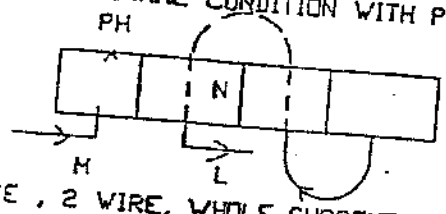
SINGLE PHASE , 2 WIRE, WHOLE CURRENT CLASS 1.0 STATIC ENERGY METER  
ACCURACY TEST UNDER TAMPER CONDITION

(e) SUPPLY AND LOAD SIDE INTERCHANGED AND PHASE & NEUTRAL REVERSED  
AND LOAD EARTHED



SINGLE PHASE , 2 WIRE, WHOLE CURRENT CLASS 1.0 STATIC ENERGY METER  
ACCURACY TEST UNDER TAMPER CONDITION

(f) PART-I NORMAL CONDITION WITH PARTIAL EARTH LOAD OF NEUTRAL ELEMENT



SINGLE PHASE , 2 WIRE, WHOLE CURRENT CLASS 1.0 STATIC ENERGY METER  
ACCURACY TEST UNDER TAMPER CONDITION

(f) PART-II PHASE NEUTRAL INTERCHANGED WITH PARTIAL EARTH LOAD  
OF MAIN ELEMENT

